

OPAM'S IMPACT

OPAM aims to make an impact by addressing the following issues:

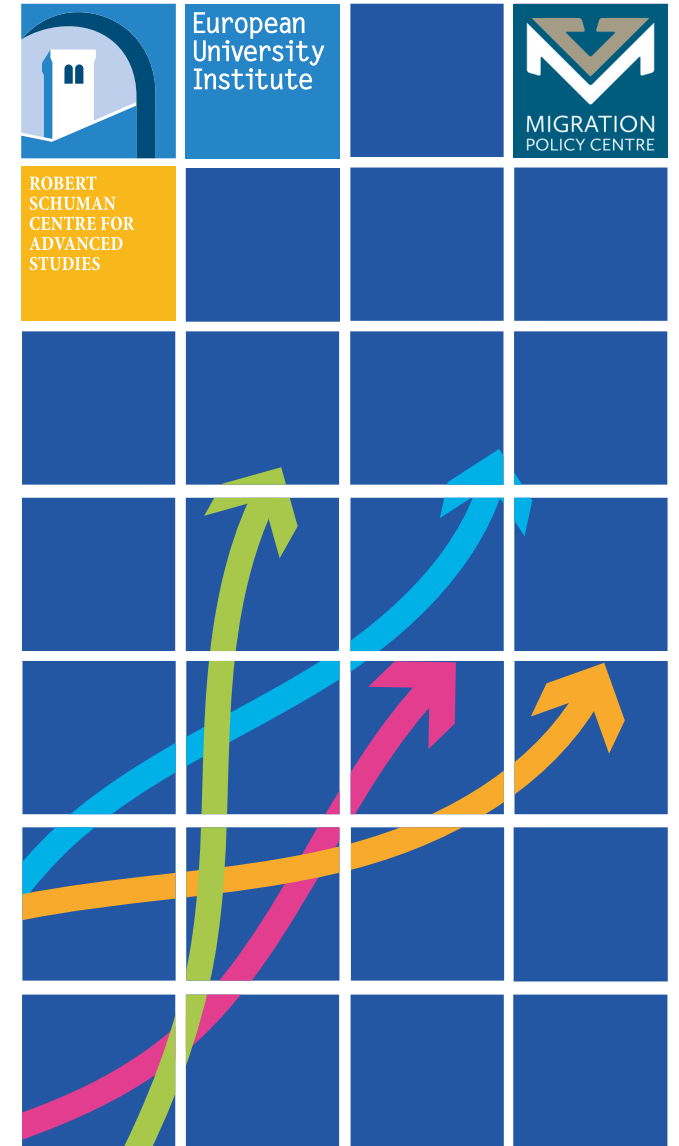
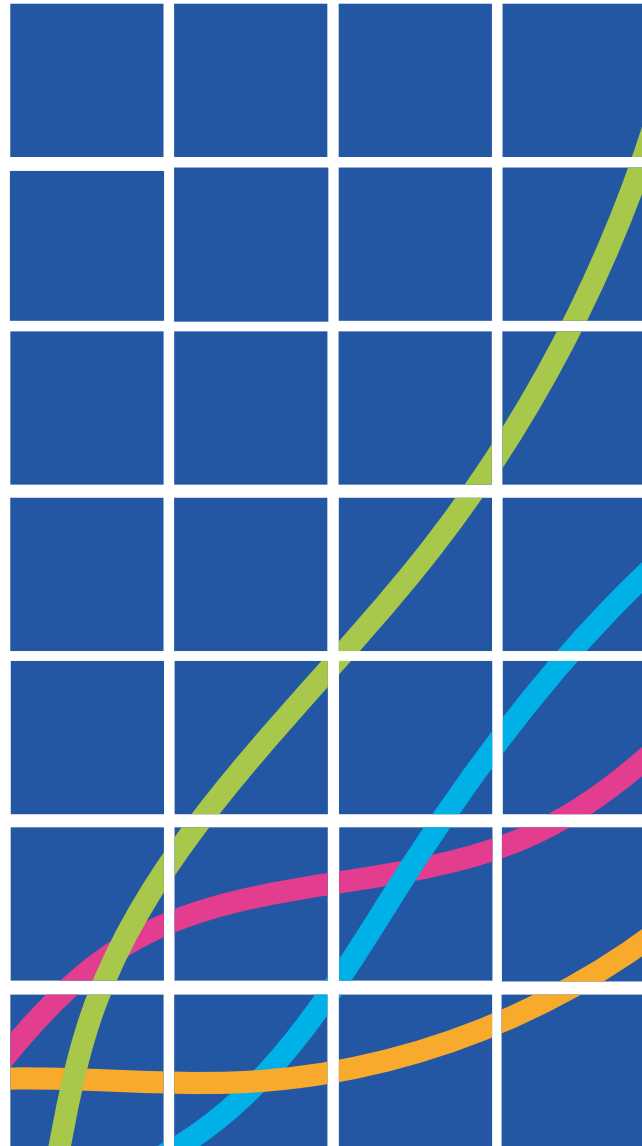
- There is limited knowledge and consensus on what drives attitudes to migration → OPAM will generate in-depth research to tackle these shortcomings.
- Considerations on attitudes to migration are often made taking into account only specific geographic areas or types of migration → OPAM will provide nuanced yet comprehensive knowledge.
- Public discourse on the topic tends to be rather uninformed → OPAM will disseminate its findings and data making it accessible to diverse audiences, and will bridge the gap between research and policy by catering to the needs of practitioners.
- There is no centre that covers the topic in all its facets → OPAM aims to become the go-to centre for those interested in how attitudes to migration are formed.

OPAM TEAM:

JAMES DENNISON - JAMES.DENNISON@EUI.EU
LENKA DRAZANOVA - LENKA.DRAZANOVA@EUI.EU
ANDREW GEDDES - ANDREW.GEDDES@EUI.EU

CONTACTS:

WWW.MIGRATIONPOLICYCENTRE.EU/OPAM/
@MIGRPOLCENTRE #OPAM
MPC@EUI.EU



OBSERVATORY OF
PUBLIC ATTITUDES
TO MIGRATION



European
University
Institute



THE OBSERVATORY OF PUBLIC ATTITUDES TO MIGRATION (OPAM) IS THE FIRST INITIATIVE OF ITS KIND DEDICATED TO GATHERING, PRESENTING AND ANALYSING IN A SINGLE SOURCE COMPREHENSIVE, PAN-EU DATA ON PUBLIC ATTITUDES TO MIGRATION.

OPAM was established in 2017 as part of the Migration Policy Centre (MPC) within the Robert Schuman Centre for Advanced Studies at the European University Institute. To support this work, OPAM has established a collaboration with the Europe-wide opinion polling company IPSOS enabling access to IPSOS data. OPAM will also utilise other publicly available sources (e.g. Eurobarometer, the European Social Survey).

MORE SPECIFICALLY, OPAM WILL:

- Create a map-based and interactive resource that will allow users to view relevant data for each EU member state.
- For each member state, present analysis of key trends and patterns in attitudes to migration.
- Explain variation in public attitudes to migration across countries, time, different groups of citizens, types of migration flows and the life course.
- Perform in-depth analyses drawing from the fullest range of existing data, as well as producing primary sources of data.
- Effectively communicate its findings to policy makers, academics and citizens. It will relate its findings to the broader political context, offer policy recommendations and make data accessible through effective visuals.

THE OPAM DATA HUB

OPAM will bring together the widest possible range of existing data on attitudes to migration in Europe. Data will be made available for download and presented within an online 'data playground' for quick analysis by non-experts, all in a single, easily accessible online data hub.

